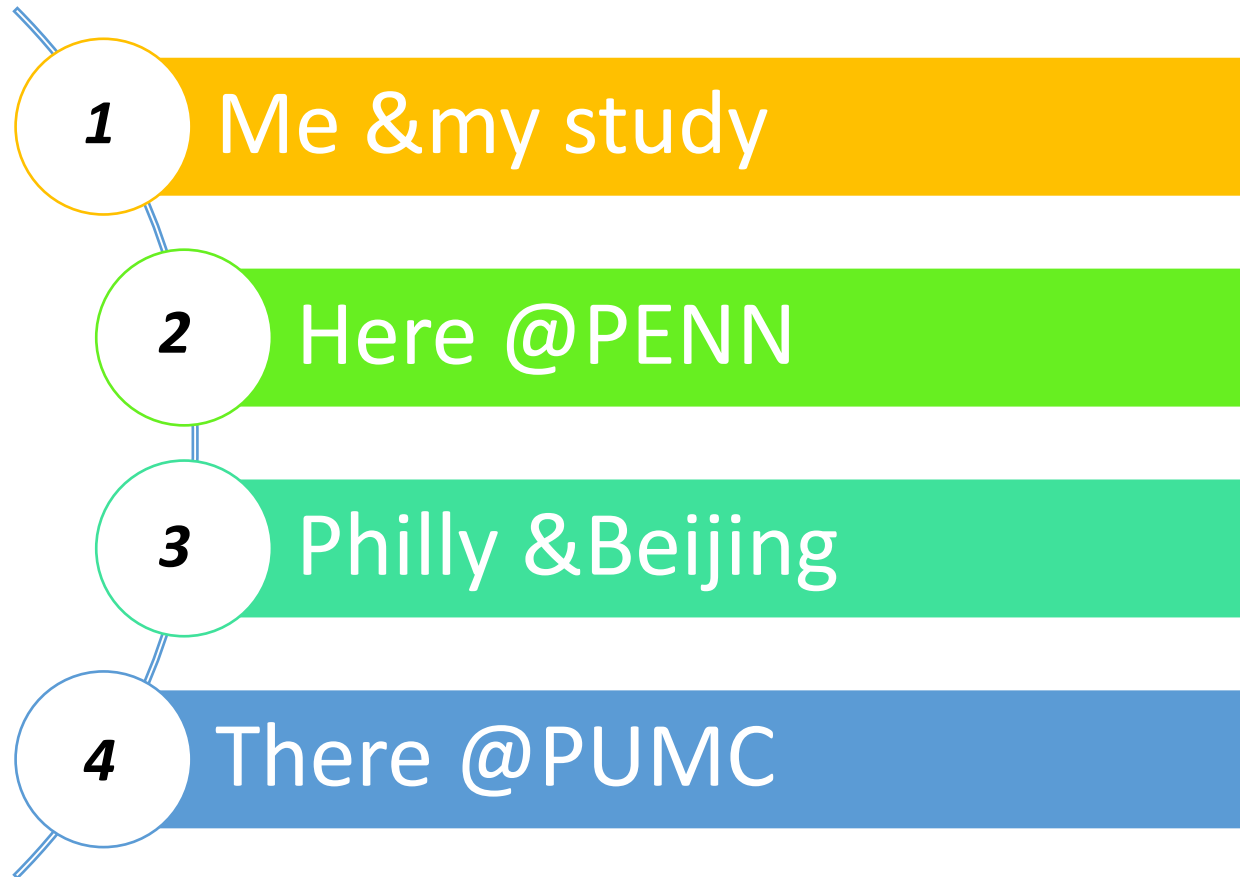


Here@PENN
There@PUMC

Zhigang Xue
02/13/2019





About Me

- Zhigang Xue
- 4/5 PhD program
- Peking Union Medical College & Chinese Academy of Medical Sciences (Tsinghua University, School of Medicine)



清华大学


Tsinghua University

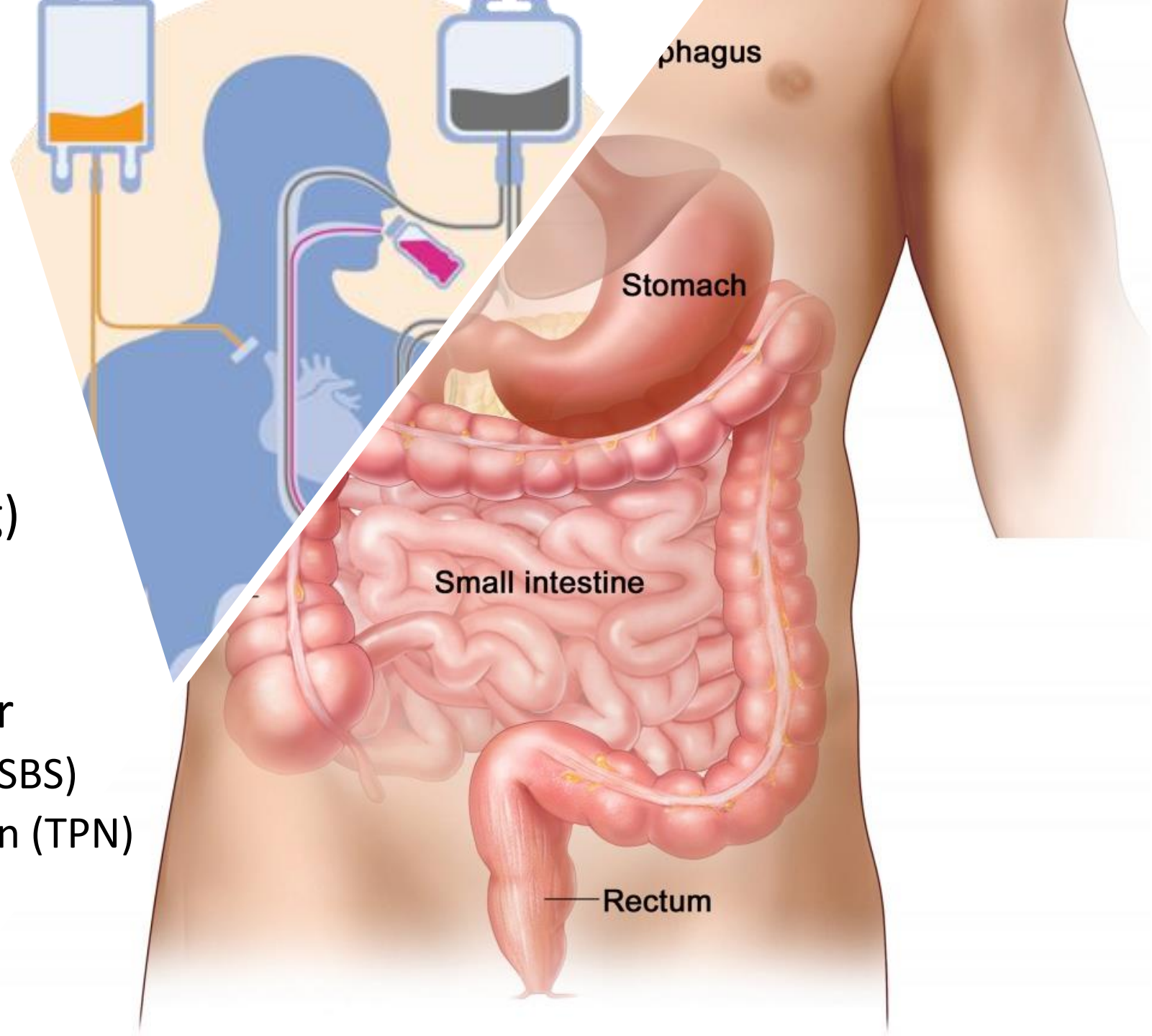


北京协和医院
PEKING UNION MEDICAL
COLLEGE HOSPITAL

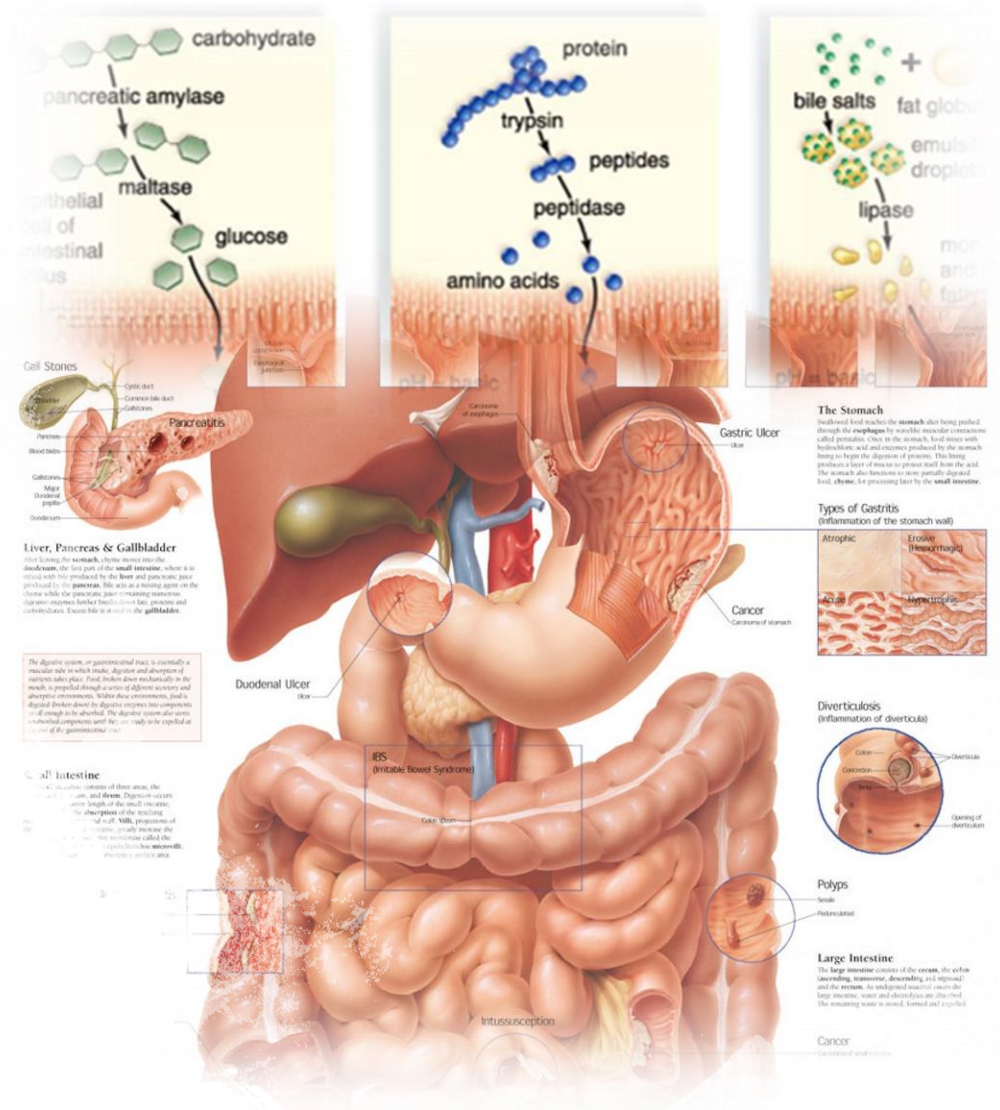
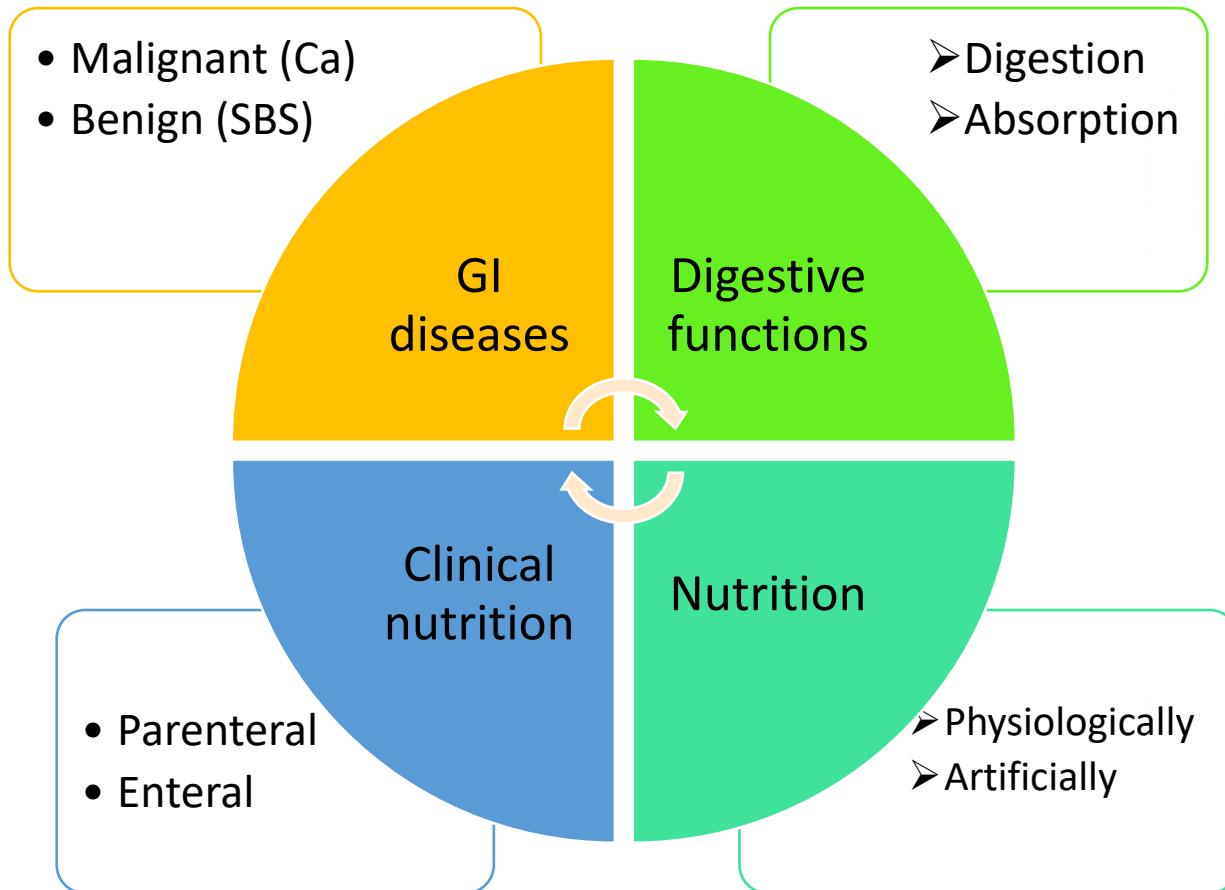


Research Fields

- Major in Surgery
(Gastrointestinal, GI Surg)
 - ☐ GI Cancer
 - ☐ Clinical Nutrition
- Mentor  Prof. Compher
 - ☐ Short Bowel Syndrome (SBS)
 - ☐ Total Parenteral Nutrition (TPN)



Closely related



Nutrition (clinical & daily)



Glucose vs Flour

Amino acid vs Protein

Fatty acid vs Oil

All in One

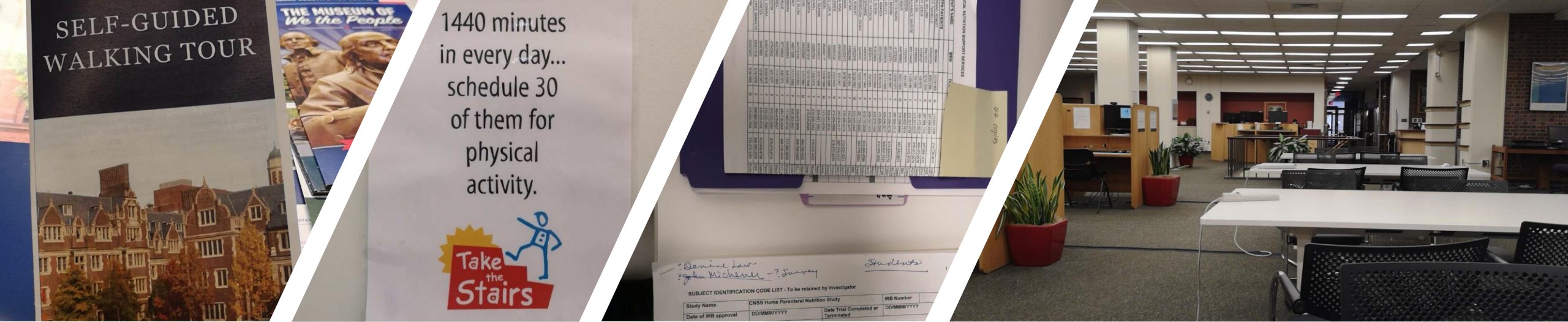




With Penn Nursing

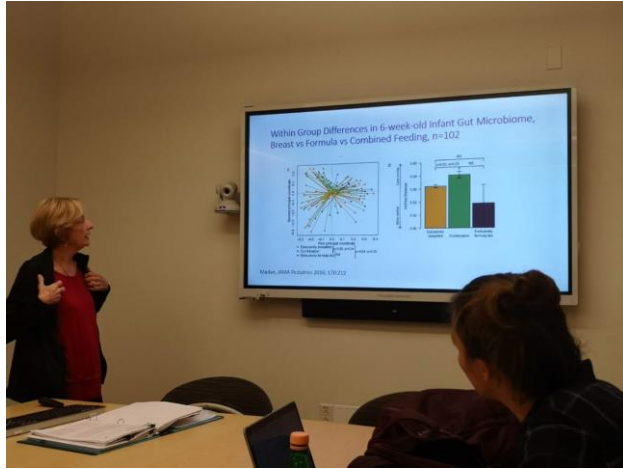


- *Share the same goals in health care*
- *Share the same interest in clinical research*
- *Innovating for Life and Living*



Here@Penn

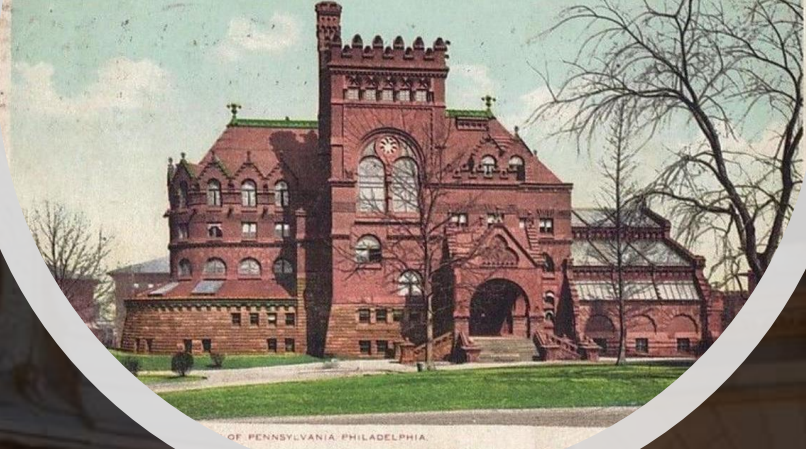
- Guided books→familiar
- Warm notes→healthy
- Well-organized project→impressive
- Rich resources→improved
- Spacious office→efficient



Feel@Home


- Learning frontier of nutrition and microbiome
- Get-togethering with teachers and friends
- Joining in diversified classes and activities





Fisher Fine Art Library
Love @Penn

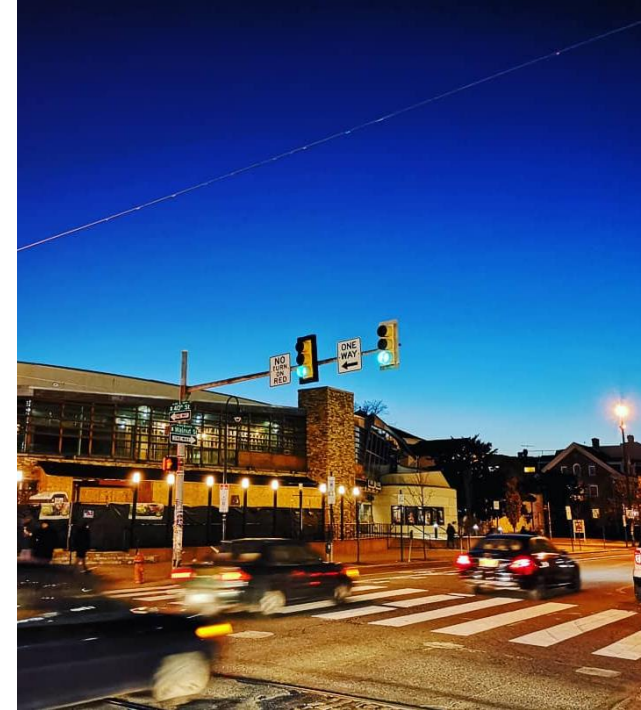
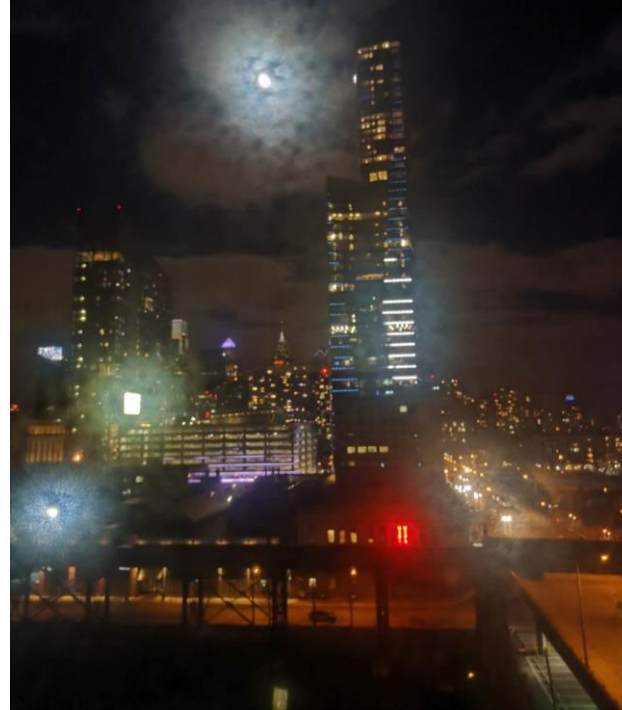
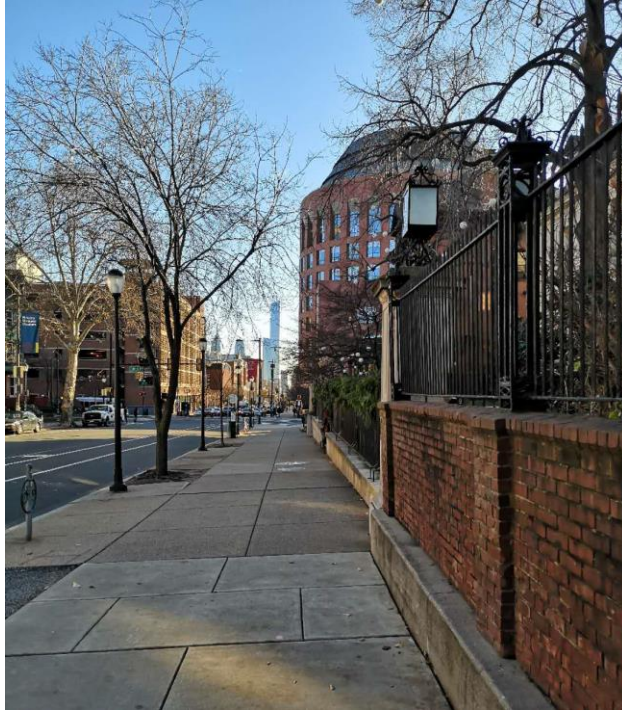


A map of the United States with state boundaries and names labeled. Philadelphia is marked with a red heart icon in the Northeast. A semi-transparent white circle is overlaid on the left side of the map, containing the title and a list of facts. The text 'United States' is centered on the map.

In Philadelphia

- W75° N40°
- 1.6 million
- Rich culture and history

Philadelphia is the birthplace of the [United States Marine Corps](#),^{[22][23]} and is also the home of many U.S. firsts, including the first [library](#) (1731),^[24] [hospital](#) (1751),^[24] [medical school](#) (1765),^[25] [national capital](#) (1774),^[26] [stock exchange](#) (1790),^[24] [zoo](#) (1874),^[27] and [business school](#) (1881).^[28] Philadelphia contains 67 [National Historic Landmarks](#) and the [World Heritage Site of Independence Hall](#).^[29] The city became a member of the [Organization of World Heritage Cities](#) in 2015,^[30] as the first World Heritage City in the United States.^[13] Although Philadelphia is rapidly undergoing [gentrification](#), the city actively maintains mitigation strategies to minimize displacement of homeowners in gentrifying neighborhoods.^[31]



Philadelphia

- From my view

A map of East Asia, including parts of China, Mongolia, North Korea, South Korea, and Japan. A large, semi-transparent white circle is overlaid on the left side of the map, containing text about Beijing. The circle is centered over the Beijing region. The map shows the Yellow Sea, East China Sea, and Sea of Japan. Various cities are labeled, including Beijing, Seoul, Sapporo, and Osaka. The text 'In Beijing' is prominently displayed in the center of the circle.

In Beijing

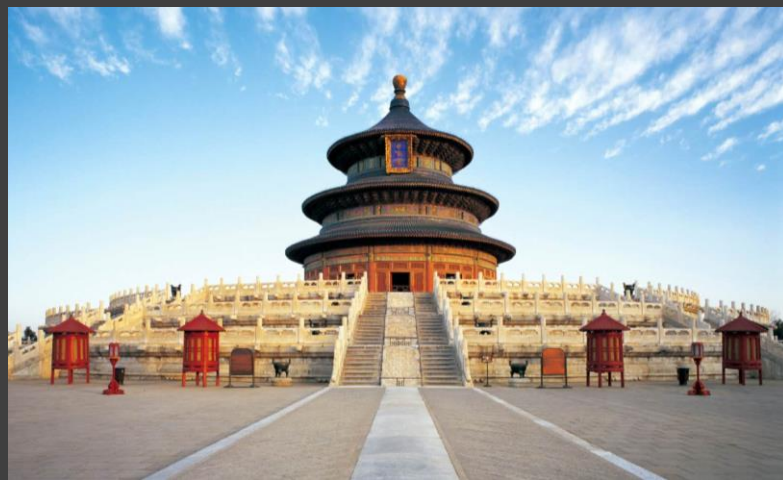
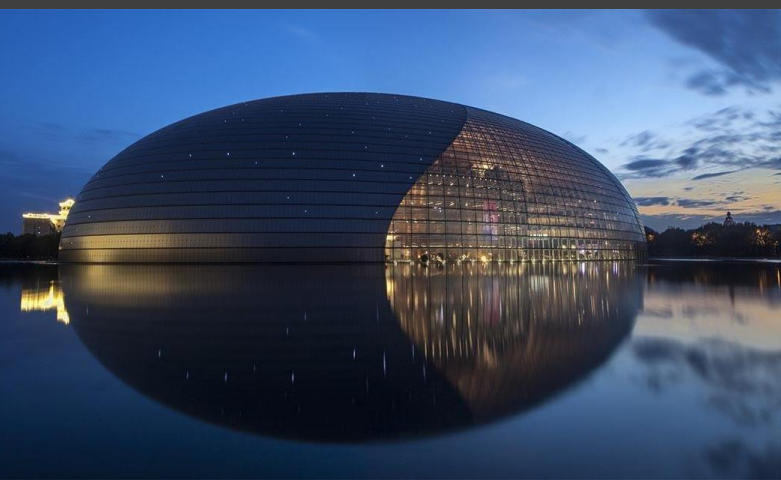
- E116° N40°(39-41)
- 21.8 million
- Rich culture and history

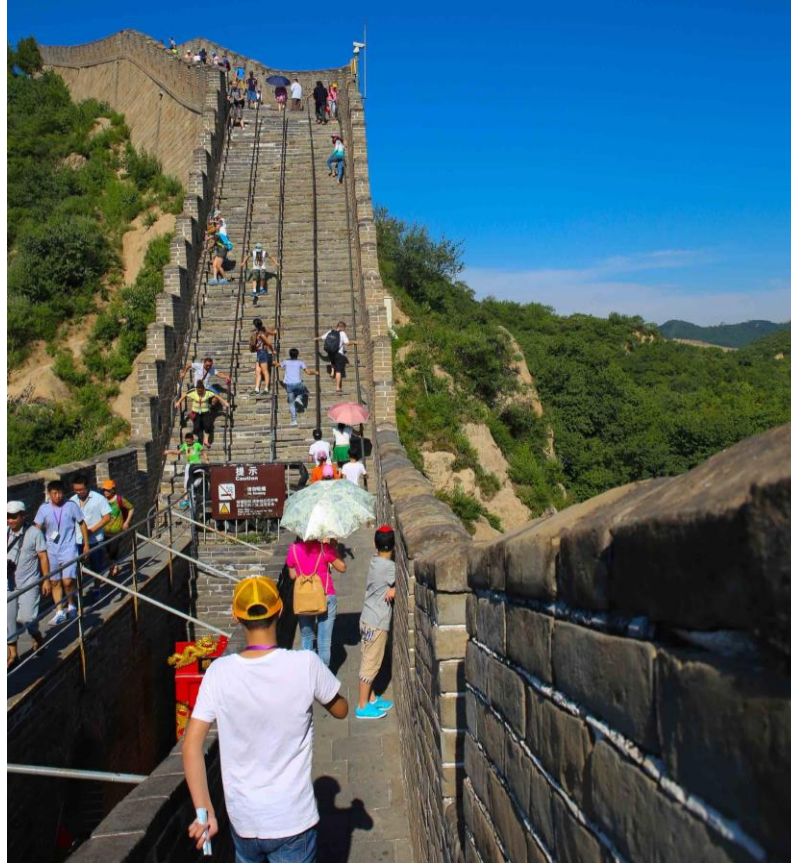
the emperor and thus was the perfect location for the imperial capital. The city is renowned for its opulent palaces, temples, parks, gardens, tombs, walls and gates.^[21] It has seven UNESCO World Heritage Sites—the Forbidden City, Temple of Heaven, Summer Palace, Ming Tombs, Zhoukoudian, and parts of the Great Wall and the Grand Canal— all popular locations for tourism.^[22] Siheyuans, the city's traditional housing style, and hutongs, the narrow alleys between siheyuans, are major tourist attractions and are common in urban Beijing.



Beijing

👉 you may know





Crowded Beijing

May still beyond your imagination

There @PUMC School & Hospital





PHOTO BY R

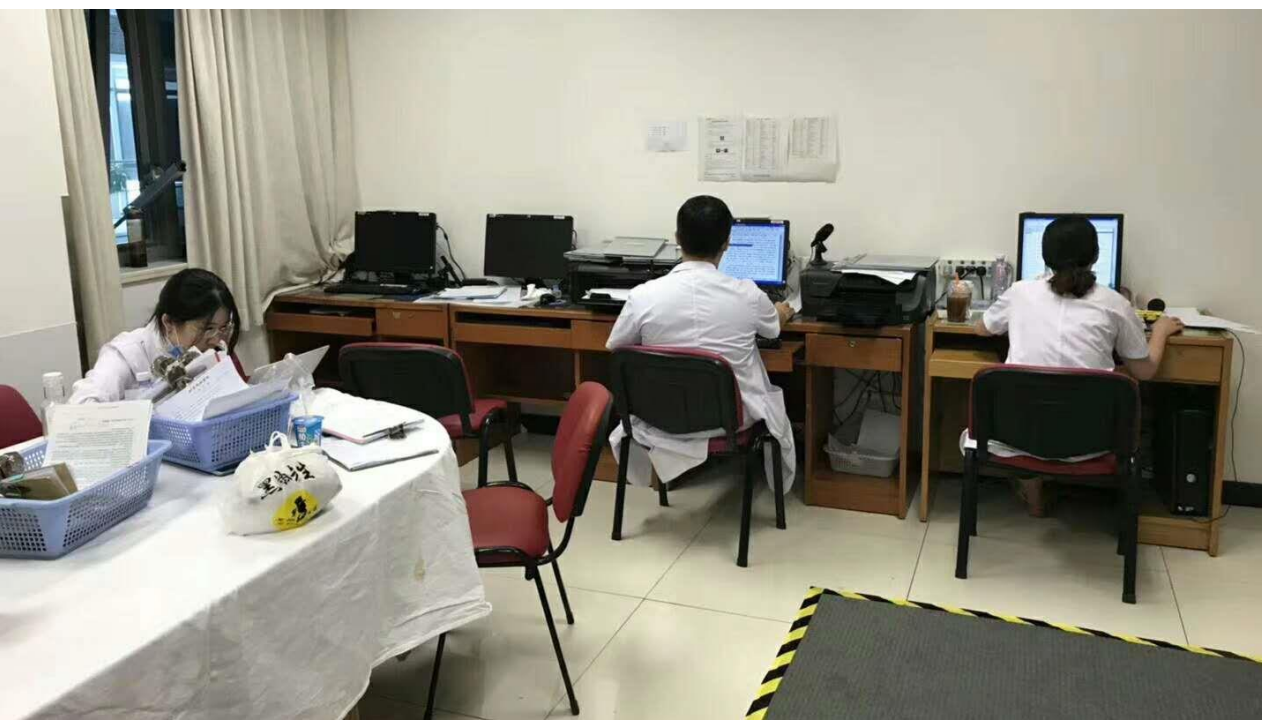
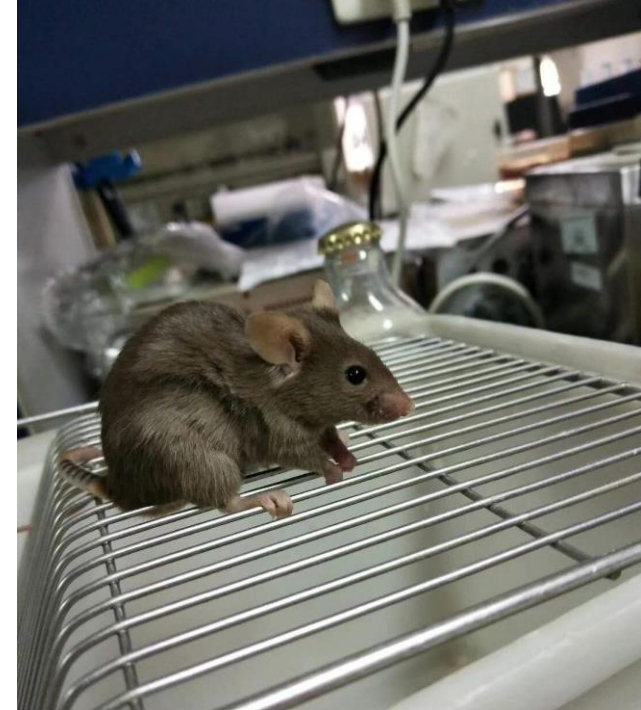


Peking Union Medical College Hospital

Rank 1st in China

Funded by Rockefeller Foundation in 1921

PUMCH
Photographed by Xiao Meng



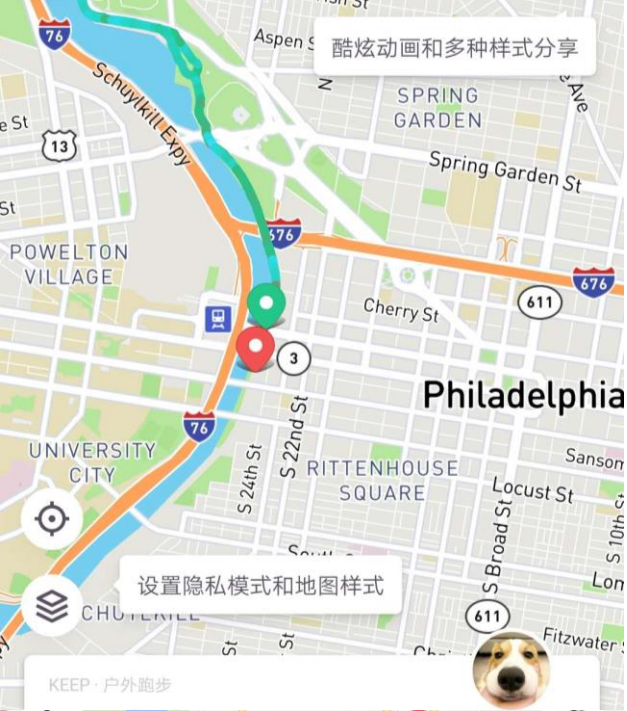
There @PUMC

- Clinical study and practice
- Laboratory training and research

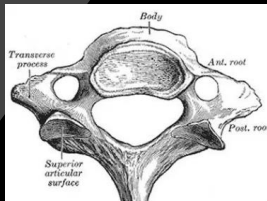
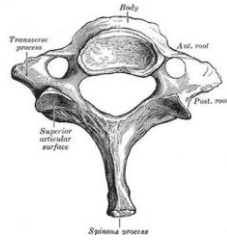


Me More

Nutrition, Food and Dumplings

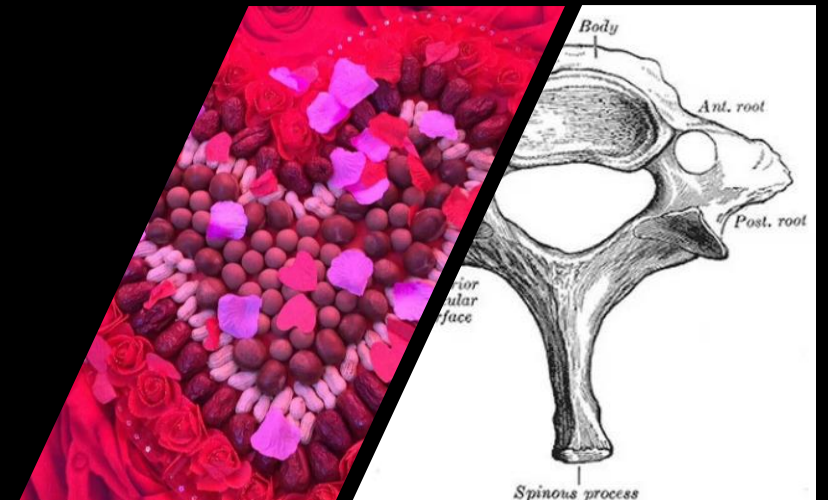


When
Nerd from Beijing
Meets
Life in Philly



Smile & Love

Smile like a vertebrae
And Love And Care



Thank you for your attention

Q&A

Email: hyperian@163.com