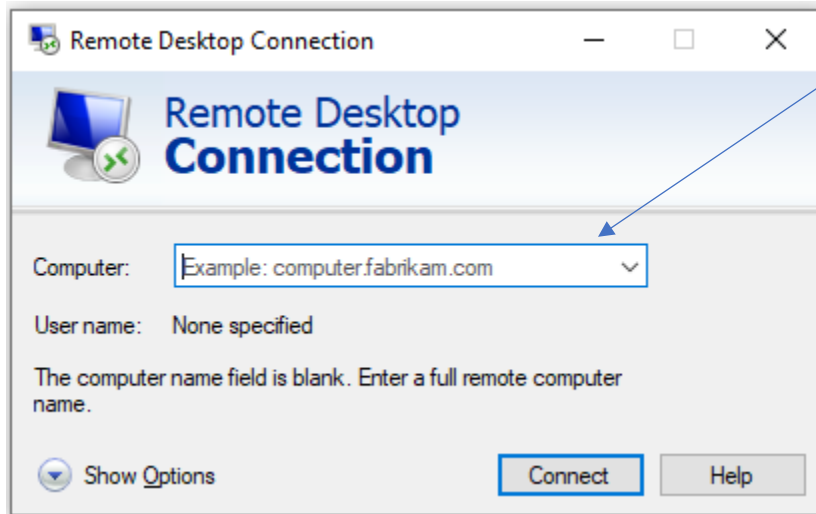
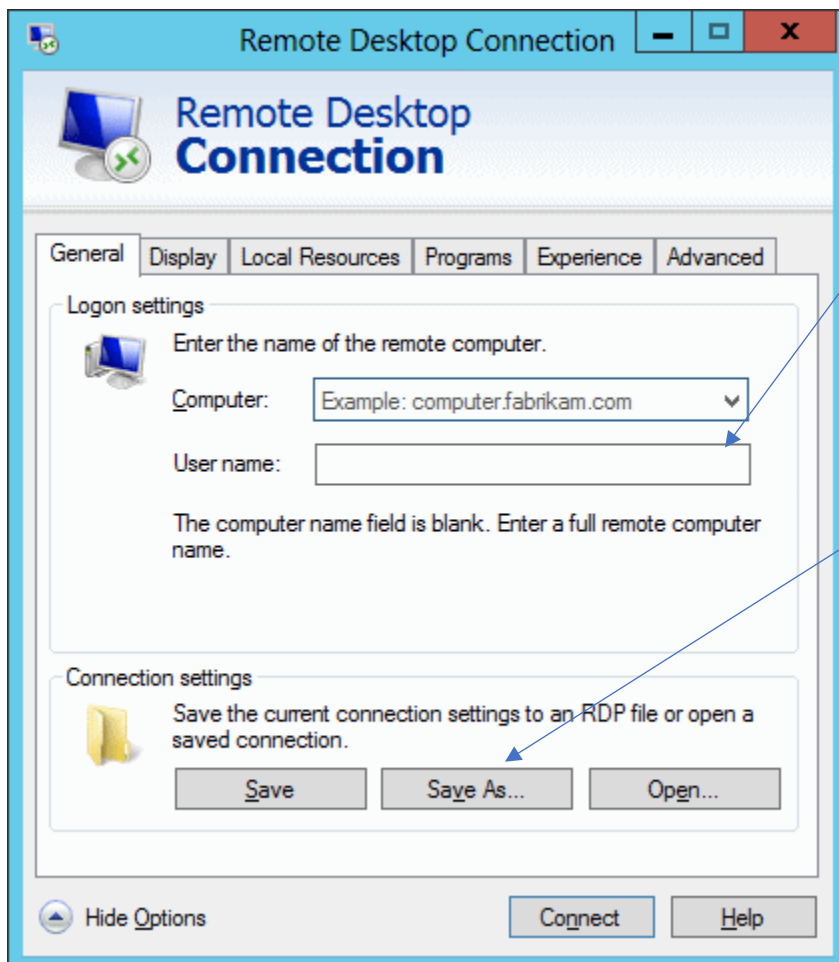


## Windows Remote Desktop Connection Instructions

1. Open Remote Desktop Connection by clicking on the Tile icon in the lower left-hand corner > All Programs > Windows Accessories > Remote Desktop Connection
2. In Computer, type the IP address of your work computer (The ITS Service Desk Team will provide your IP address)



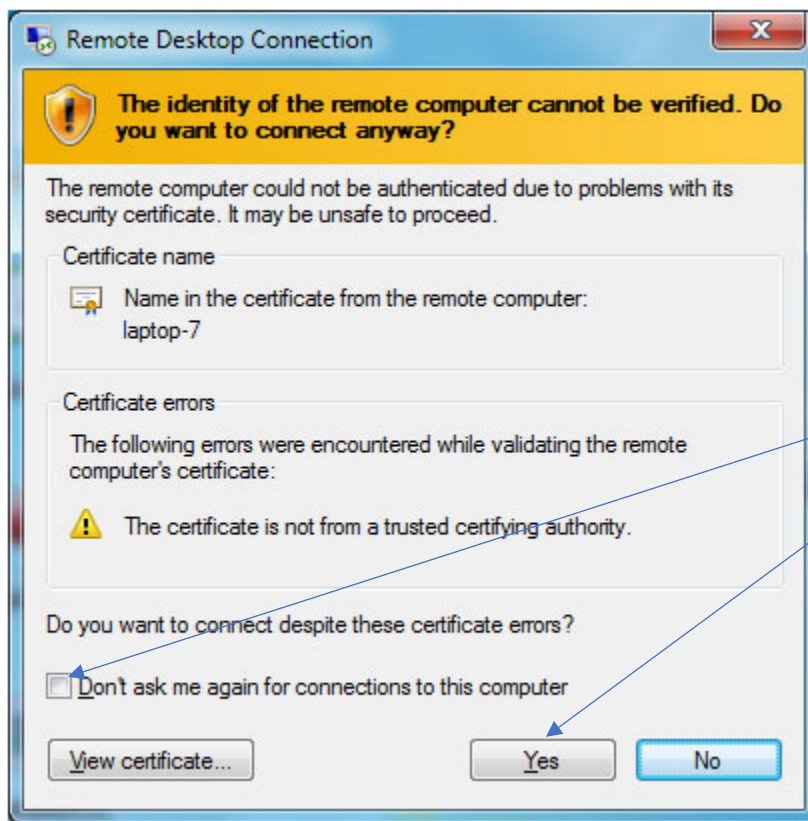
Type in your IP address (see ITS to obtain)



Type your username as:  
NURSING\Your PennKey

Click Save As to save to save the connection to your preferred location - this will save for future sessions

3. Click on the Show Options button and in the Username field type Nursing\Your username (where “username” is the PennKey username you use to login to your SON computer)
4. Before clicking on Connect, click on Save As to save the Remote Desktop connection to your desktop
5. The first time you initiate your Remote Desktop Connection, you may receive the messages listed below:



Click on this box and then click on Yes to accept the confirmation.



Click this box to remove future messages and then click Connect

6. Once you've successfully connected, you will see your desktop computer and it will appear as if you are sitting at your School of Nursing desk