

Office of Nursing Research

Volume 1, Issue 1

November, 2010

INSIDE THIS ISSUE:

Kudos	2
Intro to Deans	3
ONR's Services	3
How to Access	3
BRLab Services	4
Mock Review	5
Res. Colloquium	5
Research News	5
Biostats	5
NIH Submission	6

See Page 3:

- New Associate Dean for Research, Yvonne Paterson, PhD, joins Nursing from the SOM.
- New Assistant Dean for Research, Abigail Cohen, PhD, joins Nursing from the Center for Clinical Epidemiology and Biostatistics.

ONR'S NEW STRUCTURE

As of July 1st, 2010 the ONR has a new structure and new components. The ONR has new Associate and Assistant Deans of Research and has a melded staff who deal with both pre and post awards for sponsored projects.

Grants Managers are now assigned to specific divisions and faculty and will follow the awards from inception to completion.

To request assistance from the ONR, there is now an electronic request form.

Regular Mock Reviews of proposals will now be held for faculty to observe the process of review at the agency level. Faculty can then revise their submission accordingly.



UPCOMING RESEARCH COLLOQUIA

10.20.2010 - *Evaluation of Interactive Technologies and Teaching Strategies for Ethics Instruction of Undergraduate Nursing Students* presented by David J. Perlman, PhD, BSN Sr. Lecturer

11.03.2010 - *Parents' Roles in Health Care and Illness Management for Children with Cancer and Chronic Conditions* presented by Janet A. Deatrck, PhD, FAAN Associate Professor of Nursing

11.17.2010 - *Egyptian Experience: The Role of Nursing, VIA and Cervical Cancer Screening* presented by Howieda Ahmed Abdel-Mohimen Fouly, MA Faculty of Nursing, Assiut University, Egypt

12.1.2010 - *The Quality of Transitional Care - From Research to Quality Measures* presented by Martina Roes, PhD, Professor of Nursing Science University of Applied Sciences, Bremen, Germany Visiting Scholar

12/8/2010 - *From Sacred to Secular, Local to Global: A Research Program for Examining Nursing and its History from a New Perspective* presented by Barbra Mann Wall, PhD Associate Professor of Nursing

Faculty/Student Awards:

Kathy Bowles, PhD, RN, FAAN R01 (NIH/NINR)
Decision Support: Optimizing Post Acute Referrals and Effect on Patient Outcomes
Grants Specialist: Denise Scala

Jianghong Liu, PhD, RN R01 (NIH)
Lead exposure, externalizing behavior, and neurobiological mediating factors
Grants Specialist: Denise Scala

J. Margo Brooks-Carthon, PhD, RN K01 (NIH)
Nurse Practice Environment influences in Reducing Disparities in Hospital Outcome
Grants Specialist: Ruthanne Porreca

Nancy Hanrahan, PhD, RN, CS Foundation grant (RWJF)
Advanced Practice Psychiatric Nurse-Transitional Care Model to Improve Quality of Health Care for Individuals with Serious Mental Illness
Grants Specialist: Charlotte Liu

Katherine Abbott, PhD, MGS Foundation grant (Frances Parker Memorial Home)
Social Networks in Long-Term Care: Pilot Testing Novel Approaches to Measurement
Grants Specialist: Denise Scala

Margaret Griffiths, MSN, RN, CNE, CDE Pennsylvania Higher Education Foundation
Nursing Education Block Grant
Grants Specialist: Sherri Kaplan

Mary Naylor, PhD, RN, FAAN Foundation grant (RWJF)
IFN Support - Implementation Phase
Grants Specialist: Denise Scala

Pre- and Post Doctoral Students

Valerie Rogers Foundation grant (American Nurse Foundation)
Comparative Measurement of Periodic Limb Movements in Sleep between Polysomnography and Actigraphy in Children with Sickle Cell Disease
Grants Specialist: Denise Scala

Justine Sefcik Foundation grant (Jonas Center for Nursing Excellence)
Jonas Center for Nursing Excellence
Grants Specialist: N/A

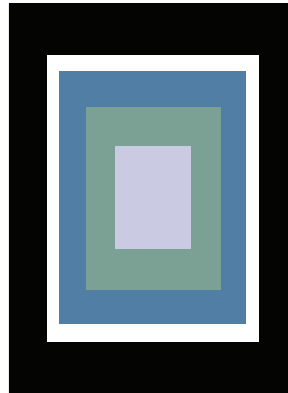
Kim Mooney-Doyle F31 (Ruth L. Kirschstein National Research Service Award)
Exploring Family Decision-Making in Pediatric Palliative Care
Grants Specialist: Ruthanne Porreca

Associate and Assistant Deans for Research



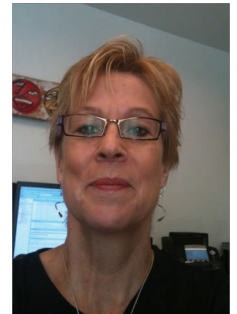
As the Associate Dean for Research, Dr. Paterson has primary administrative oversight for the School's research initiatives including policy making and the promotion and

facilitation of all research activities in the School. She will articulate, represent, as well as provide the vision and leadership for the research portion of the School's strategic plan in concert with the University's Compact, insuring compliance with University and Federal regulatory mechanisms.



Working in collaboration with the Associate Dean for Research, the Assis-

tant Dean, Dr. Cohen, oversees and directs daily operations for the ONR including operational, financial, regulatory, human resource and research administration activities. She oversees and manages the electronic proposal submission process and sponsored project activity for faculty; ensures integrity of financial transactions and develops effective partnerships with faculty, project managers and other grant holders.



ONR Services

- ◇ **Proposal Development:** review sponsor & Penn guidelines – administrative, financial, contractual; develop budgets; create/upload proposal in PennERA; facilitate proposal development meetings with OTIS & IR Lab; format proposal to sponsor guidelines
- ◇ **Support Services:** assist Division support staff with Biosketch & Other Support format; provide templates for letters of support; maintain templates for Resources/

Environment; liaison with subcontractors for proposal development; and provide assistance with JIT requests.

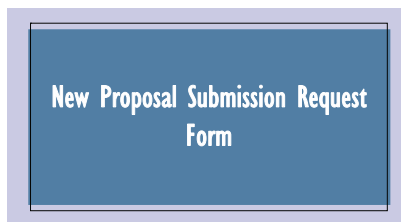
- ◇ **Communications:** communicate funding opportunities; announce awards/grants; hold research colloquia; Represent SON at Penn ERA, Provost Council for Research, ORS Advisory Committee, and other University meetings
- ◇ **Compliance:** provide guidance

on IRB and assist with submission; monitor Profiler and all training compliance statistics; communicate compliance training needs with Division Chairs and PI supervisors.

- ◇ **Statistical Support:** facilitate research via consultation; pre-award support: proposal development in areas of study design, power and statistical methods; Post-award support: abstract and manuscript preparation

How to access ONR

The ONR has a new method to request services. The Proposal Submission Request form, available on our Website. Is completed by the faculty member; the request is then approved and assigned to the appropriate Grants/Business Manager. The name of the assigned manager and deadline date information will be sent as an acknowledgment of your request. You then communicate directly with your Grants Manager about your proposal from submission to project close.



Click the Proposal Submission Report form link on the ONR website.



<https://share.nursing.upenn.edu/sites/onr/default.aspx>

Biobehavioral Research Lab

As part of the ONR, the Biobehavioral Research Laboratory hosts state-of-the-art equipment that enables faculty members and doctoral students to conduct interdisciplinary research.

The Biobehavioral Research Lab hosts a number of scientists from key disciplines, including Nursing, Pharmacy, Cardiology, Environmental Sciences, Physiology, and more, in an ongoing interdisciplinary effort.

Lab Director:
Charlene W Compher, PhD, RD, FADA, CNSC, LDN Dr. Compher's current research interests are focused on nutritional and pharmacological treatments with potential impact on intestinal failure or obesity. Dr. Com-

pher is a renowned practitioner of the complex science of parenteral (by vein) and enteral (by the intestinal tract) nutrition support, a practice for which she maintains specialty certification in addition to her dietetic registration.

Lab Manager: Juan Muniz, PhD
Dr Muniz has a BS in Agricultural Engineering, a BS in Food Science, a MS in Microbiology and Chemistry and a PhD in Toxicology. Dr. Muniz research focus is on the toxicology of pesticides.

Contact Biobehavioral Research Lab:
Research-Lab@nursing.upenn.edu



In the newly-renovated laboratories on IR, equipment and personnel are available to assist you with obtaining biological data. Drs. Compher and Muniz will consult with you to determine which assays are best for your project and to estimate the cost of these assays for your budget planning. Dr. Muniz will also develop a sample collection, processing and storage plan for your project team, and he will do assays for you. If needed, we can assist you with writing the assay description for your grant

application, for IRB documents and even for your publications.



We are able to measure many biological markers of physiological function and

dysfunction (including cytokines, hormones, select mineral elements) using ELISA (enzyme-linked immunosorbent assay). Dr. Muniz is also expert with chemical analytical techniques such as gas and liquid chromatography and mass spectroscopy, methods that can identify components of fluids and measure the amount that is present. Our labs are also fully equipped to grow cells in culture and to analyze the expression of genes and protein from them.

Biobehavioral Research Lab Assays

Toxicology: Comet , Comet + Enzyme treatment, MDA, MDA Colorimetric, Isoprostane, 8-OXO, Organopesticide metabolites, phthalates

Cytokines: IL-6, TNF α

Metabolic : Glucose, Creatinine
Hormones: 2-Hydroxyestrogen , 16 α -Hydroxyestrogen, Leptin, Ghrelin, Catecholamines, DNA extraction



Mock Review

ONR is now offering a mock study section review of your grant proposal for any NIH mechanism

What is a Mock Review?

A critique of a completed grant application modeled on an NIH study section.

Three expert faculty review the proposal and write an NIH formatted critique, scoring each category as required by the NIH.

A “study section” is held to discuss the critiques which the PI attends to listen in to get tips for revisions to the study.

What a Mock Review is not:

It is not a rewrite of a proposal.

It does not provide advice on study design.

It does not replace having a proposal read by a mentor, research center or colleague.

What is the scheduling method for Mock Review?

Check the box “request for a mock review” when completing the proposal submission form on the ONR intranet page.

Review should be scheduled at least a week before a proposal is due to ONR so that changes can be made before submission deadlines.



Biostatistical Support

Biostatistical Services

- ◇ Pre-award support
- ◇ Post-award analyses
- ◇ Consultation
- ◇ Data analyses
- ◇ Abstract/manuscript preparation

Teaching

- ◇ Guest lectures
- ◇ Independent study
- ◇ Research Residency
- ◇ TA Mentorship
- ◇ Dissertation Advising



Contact: Alexandra L. Hanlon, PhD
Office of Nursing Research
Claire M. Fagin Hall
Room 479L 215-898-4581

Link for Request Form: <https://share.nursing.upenn.edu/sites/onr/stats/Lists/Request%20for%20Biostatistics%20Support/AllItems.aspx>

OR
Intranet ☞ Departments ☞ ONR ☞
Request for Biostatistics Support

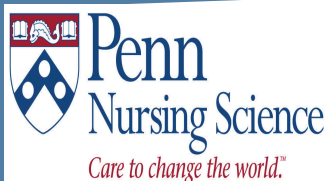
Research Related News

July 1st 2010 Patent and Tangible Research Property Policies and Procedures of the University of Pennsylvania Instituted (http://www.upenn.edu/almanac/volumes/v57/n01/pdf_n01/Patentpolicy.pdf)

Postdoctoral Stipend Levels for FY2011 (<http://www.upenn.edu/almanac/volumes/v57/n01/postdocs.html>)

7/13/2010 Policy for Postdoctoral Trainees at the University of Pennsylvania (<http://www.upenn.edu/almanac/volumes/v57/n01/postdocpolicy.html>)

Procedural Guidelines for Principal Investigators (“PIs”) Leaving the University of Pennsylvania: Handling Awards, Research Materials, Equipment and/or Other Research-Related Issues (<http://www.upenn.edu/researchservices/PItransfer.html>)



Office of Nursing Research
 Claire M. Fagin Hall, Floor 4L
 418 Curie Blvd.
 Philadelphia, Pa 19104-6096

Phone: 215-898-3151
 Fax: 215-898-3056
 E-mail: research@nursing.upenn.edu

SCHOOL OF NURSING

we're on the web at

[http://
 www.nursing.upenn.edu/
 research/Pages/
 default.aspx](http://www.nursing.upenn.edu/research/Pages/default.aspx)

Care to Change the World: Locally and Globally

Penn Nursing Science is characterized by research leadership as can only happen in a research-intensive University. Among colleges of nursing, Penn Nursing is currently ranked first of those receiving funding from the National Institutes of Health, enabling Penn researchers to affect the course of illness throughout the lifespan, promote health and increase disease prevention, enhance the quality of life, eliminate health disparities, and set direction for end-of-life care. To do so, faculty members have adopted and adapted new technologies, including telehomecare and use of portable defibrillators.

Through major research awards, the University's significant resources, and the Office of Nursing Research, faculty and students are strongly supported in their efforts to advance the front lines of nursing knowledge. Training grants and other research programs support graduate students and postdoctoral fellows in order to create a new generation of researchers to create new knowledge and advance the profession.

NIH Submission Dates

Mechanism(s)	Cycle I Due Date	Cycle II Due Date	Cycle III Due Date
R01 (new)	February 5	June 5	October 5
K Series (new)	February 12	June 12	October 12
R03, R21, R33, R21/R33, R34, R36	February 16	June 16	October 16
R01 (renewal, resubmission, revision)	March 5	July 5	November 5
F Series Fellowships (new, renewal, resubmission)	April 8	August 8	December 8
F31 Diversity Fellowships (new, renewal, resubmission)	April 13	August 13	December 13
AIDS and AIDS-Related Applications (All Mechanisms Cited Above [new, renewal, resubmission, revision])	May 7 (old date May 1)	September 7 (old date September 1)	January 7 (old date January 2)
Review and Award Cycles	Cycle I	Cycle II	Cycle III
Scientific Merit Review	June - July	October - November	February - March
Advisory Council Review	October	January	May
Earliest Project Start Date	December	April	July