



**Feeding Behaviors and Energy Balance of Infants with Congenital Heart Disease**

**Study Investigators**

Dr. Barbara Medoff-Cooper is the principal investigator. She has many years of experience studying feeding behaviors in high risk infants. Her interdisciplinary team consists of nurses, cardiologists, growth and metabolism specialists, a psychologist, and a bioengineer.

**Nursing at University of Pennsylvania**

Barbara Medoff-Cooper, Ph.D., FAAN,  
Judy Verger, R.N., M.S.N., CPNP

**Cardiology**

Brad Marino, M.D.  
Gil Wernovsky, M.D.

**Growth and Metabolism**

Virginia Stallings, M.D.  
Babette Zemel, Ph.D.

**Psychology**

Joel Kaplan, M.D.

**Bioengineering**

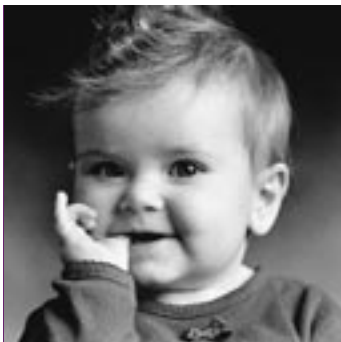
Mitchell Litt, Ph.D.

**Cardiothoracic Surgery**

J. William Gaynor, M.D.

For more information regarding this study,  
please call us at 215-898-3216 or  
visit our Web site at

[www.nursing.upenn.edu/research/CHD](http://www.nursing.upenn.edu/research/CHD)



A pioneer in pediatric medicine, education and research. The Children's Hospital of Philadelphia has fostered clinical innovations and scientific breakthroughs that have advanced pediatric healthcare worldwide. Children's Hospital is ranked as the best pediatric hospital in the nation by a comprehensive *Child* magazine survey.

[www.chop.edu](http://www.chop.edu)

 The Children's Hospital of Philadelphia®  
*A pediatric healthcare network*

34th Street and Civic Center Boulevard  
Philadelphia, PA 19104-4399  
1-800 TRY CHOP  
[www.chop.edu](http://www.chop.edu)

Copyright © 2002 by The Children's Hospital of Philadelphia

Want to know more about Feeding Infants with CHD?

Help

lead the way.



Clinical Research at



The Children's Hospital of Philadelphia®  
*A pediatric healthcare network*





### Feeding Behaviors and Energy Balance of Infants with Congenital Heart Disease

Over the past 20 years there have been many advances in the treatment and care of infants with complex congenital heart defects (CHD). Despite successful surgery, about half of all infants with CHD fail to grow. It is uncertain if infants with CHD have difficulty feeding or if they have added energy (calorie) needs. We know that infants with CHD:

- Commonly have feeding problems
- Often require more calories to grow
- Often fail to gain weight despite successful surgery

This study was designed to describe the feeding patterns and measure the energy needs of infants with CHD during the first year of life. To address these identified feeding and nutritional issues, this study can:

- Assess your infant's energy (calories) needs
- Measure his or her feeding skills
- Monitor growth and development

You and your infant can help other children by joining the Feeding and Energy Balance Study of Infants with CHD at The Children's Hospital of Philadelphia. Funding for this study is from the National Institutes of Health (NIH).



### Feeding Behaviors and Energy Balance of Infants with Congenital Heart Disease

**During the first year of life, your infant will have important state-of-the-art measurements, which will include:**

- Feeding ability, such as sucking and swallowing
- Energy expenditure when awake and while sleeping
- Growth and body composition measures
- Temperament, development and speech assessments

This research study is a collaborative endeavor between the University of Pennsylvania School of Nursing and The Children's Hospital of Philadelphia. Measurements will occur during hospitalization and in out-patient visits to the General Clinical Research Center (GCRC) on the 7th floor of the main building. At 3, 6, and 9 months of age, we will request that you and your infant come in for morning visits. At 12 months of age, we will request that you and your infant come to the GCRC in the evening for an overnight visit. We will provide funds to pay for parking and for all study related costs.

We will work with you to find convenient days and times to schedule appointments.



### Feeding Behaviors and Energy Balance of Infants with Congenital Heart Disease

#### Schedule of Measurements:

##### At the hospital:

- |                             |                               |
|-----------------------------|-------------------------------|
| ■ Feeding behavior          | ■ Dietary intake              |
| ■ Growth measurements       | ■ Sleeping energy expenditure |
| ■ Body composition analysis | ■ Total energy expenditure    |

##### 3 Months:

- |                             |                               |
|-----------------------------|-------------------------------|
| ■ Feeding behavior          | ■ Dietary intake              |
| ■ Growth measurements       | ■ Sleeping energy expenditure |
| ■ Body composition analysis | ■ Total energy expenditure    |

##### 6 Months:

- |  |                  |
|--|------------------|
| ■ Feeding behavior                         | ■ Dietary intake |
| ■ Growth and body composition measurements |                  |

##### 9 Months:

- |  |  |
|--|--|
| ■ Growth and body composition measurements |  |
| ■ Dietary intake                           |  |

##### 12 Months:

- |                             |                               |
|-----------------------------|-------------------------------|
| ■ Feeding behavior          | ■ Dietary intake              |
| ■ Growth measurements       | ■ Sleeping energy expenditure |
| ■ Body composition analysis | ■ Total energy expenditure    |
| ■ Developmental assessment  | ■ Speech evaluation           |
| ■ Stool analysis            |                               |